

Sunray/Norbury Beach



2023 By the Numbers

Overtaken Crabs: 97
Man-made Impinged Crabs: 22
Natural- Impinged Crabs: 0
Natural- Overwashed Crabs: 1



Total Rescued Crabs: 120
Total Rescue Walks: 6
Total Crabs per Walk: 20.0

Beach Information

Total Distance – 0.85 km

 Section 1- 0.10 km: Norbury Beach

 Section 2- 0.75 km: Sunray Beach

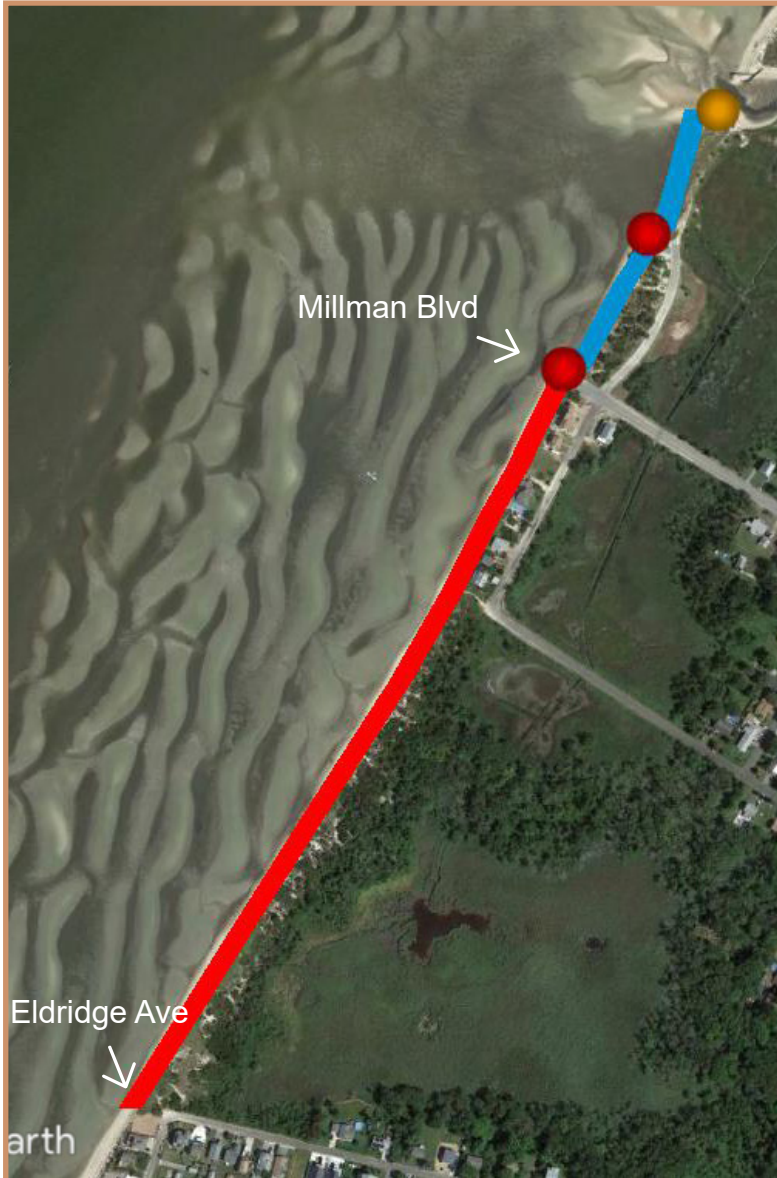
-  Known Hazards
-  Likely Hazards

Known impingement hazards: Major impingements at this beach is the riprap at the Millman Blvd bulkhead (Bin blocks/riprap) and the riprap seawall at the house to the north (House). The Likely Hazard at the north is a dilapidated dam structure which we have begun classifying as Rubble because it is no longer functional.

Safety: Be courteous to residents and properties when parking and conversing near homes, especially at night. If you feel unsafe or harassed, please remove yourself from the situation.

Contact Information:

The Nature Conservancy of NJ
Adrianna Zito-Livingston
Phone: 864-314-2800
Email: azito-livingston@tnc.org
www.nature.org/newjersey/volunteer

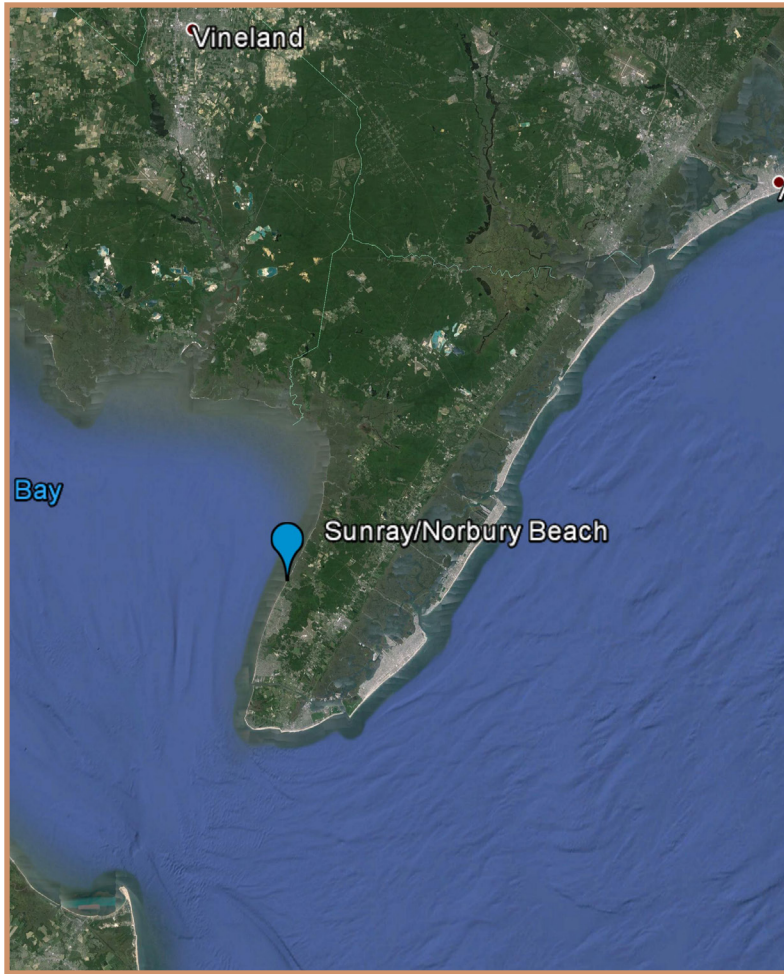


Closed: From May 7- June 7, only rescue crabs from Sundown to Sunrise when shorebirds are not present.

Sponsoring Organization: The Nature Conservancy of NJ
Ownership: Cape May National Wildlife Refuge

Other activities: Horseshoe crab spawning surveys, horseshoe crab egg density





Directions:

From the north or south: Travel on Rt. 47 to take a right (from the north) or left (from the south) on Bayshore Road/Route 603.

For Millman Blvd (north end): Take Bayshore until the next light, and continue straight onto Millman Blvd ends at the Bay.

For Eldredge Ave entrance (south end): Take Bayshore Rd until the next light, and take the left to continue south on Bayshore. Turn right onto Eldredge Ave. The best place to park is where Eldredge Ave turns slightly left and becomes Delaware Ave.

Parking:

Park at the end of either Millman Blvd or Eldredge Ave. Please be respectful of neighbors when parking near homes especially after dark.