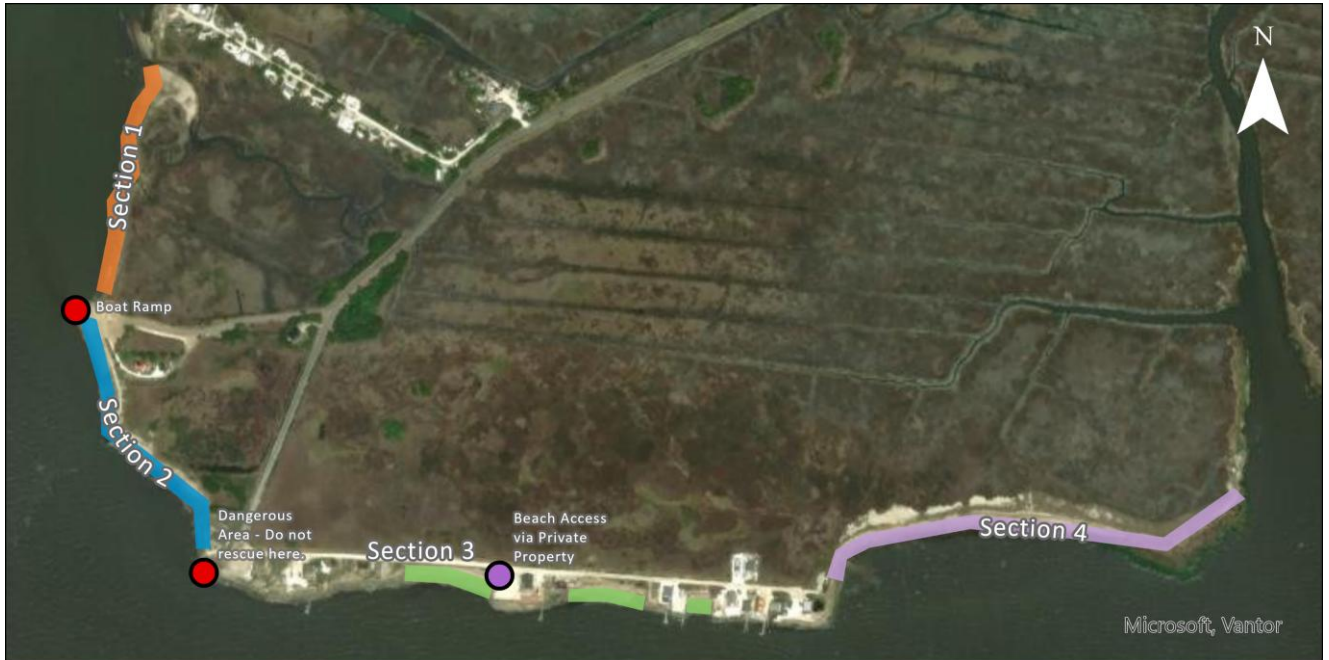


East Point Beach

Access: Moderate Walkability: Moderate Effort: Moderate
This beach is known for a variety of different hazards.



Beach Information

Access: Open

Sponsoring Organization: CU Maurice River

Ownership: State, Private

2025 Summary

Total rescued crabs	6,524
Total rescue walks	48
Total crabs per walk	135.9
Overturned crabs	800
Impingements	5,724
Natural - Veg/peat above high tide line	3,258
Natural - Overwash	1,342
Natural - Veg/peat below high tide line	250
Other	249
Rubble	247
Boat ramp	204
Bin blocks/riprap	172
Marine debris	2

Beach Sections

Total Distance: 0.81 mile

Section 1 – 0.19 mi: Includes the boat ramp and north to the creek. Only accessible on a very low tide.

Section 2 – 0.16 mi: South of the boat ramp and in front of the lighthouse to the bulkhead. Best to access on a low tide.

Section 3 – 0.13 mi: Three small sections of open beach between houses on Bay Avenue.

Section 4 – 0.33 mi: East section of beach past the houses (end of Bay Avenue) to the mouth of the creek.

Known Impingements

Section 1 – All structures associated with the boat ramp are categorized as **boat ramp**. The boulders at the top of the boat ramp are categorized as **bin blocks/rip rap**. There are additional bin blocks/rip rap along the north side of the boat ramp and in the parking area, as well as some loose rubble and natural - vegetation/peat below and above the high tide line.



Section 2 – Geotubes stretch along most of this section. These are categorized as **other** (with geotubes in description). **Do not walk on the geotubes**. There is also loose rubble and natural - vegetation/peat below the high tide line.



Section 4 – This section has loose rubble and natural - vegetation/peat below and above the high tide line.



Directions:

From South: Take NJ-47 N. When NJ-347 N splits with NJ-47 N, turn left to follow NJ-47-N. From the split, travel 5.7 miles to Glade Rd. Turn left onto Glade Rd, continue onto E Point Rd.

From North: Follow NJ-55 S to NJ-47 S in Maurice River. Stay on NJ-47 S where road splits into NJ-347 S and NJ-47 S. From the split, travel 5.3 miles to Glade Rd. Turn right onto Glade Rd, continue onto E Point Rd.

Before road ends, turn right onto Lighthouse Rd. The lighthouse will be on your left and the boat ramp in front of you.

Note: There are multiple ways to get to East Point Lighthouse. These directions have the fewest turns for people new to the area.

Parking:

The parking area is near boat ramp. When covering Sections 3 and 4, try to walk because parking is limited. If you do drive, park on the north side of Bay Avenue off the road.

Beach Access:

Access Sections 1 and 2 from the boat ramp parking area. Access Sections 3 and 4 from Bay Avenue. RTF has permission to access the first small beach in Section 3 through private property.

Courtesy:

The beaches on Bay Avenue are between homes. Do not go in front of or under homes as this is private property. RTF has permission to access the first small beach through private property. Be respectful of community members in this area.

Safety:

Take caution when rescuing as hazards include waves, sharp and slippery rubble, loose boulders, and sharp metal objects. A particularly dangerous area is marked on the map in red. If you rescue here, do so at your own risk.

Contact Information:

CU Maurice River
Julia Cassaday (Wiberg)
Office: 856-300-5331
J.Wiberg@CUMauriceRiver.org

