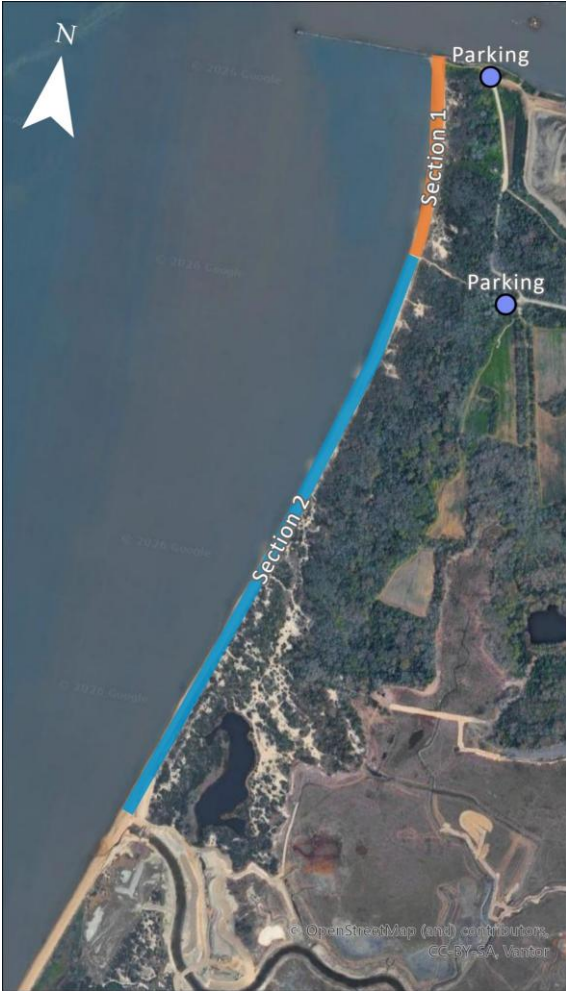


Higbee Beach WMA



Access: Moderate Walkability: Easy Effort: Easy
Low numbers of crabs to rescue here.



Beach Information

Access: Open
Sponsoring Organization: The Wetlands Institute
Ownership: NJFW Wildlife Management Area
Other Activities: Horseshoe crab spawning survey, large-scale restoration project

Beach Sections

Total Distance: 1.09 miles

Section 1 – 0.26 mi: From the jetty south to the next entrance.

Section 2 – 0.83 mi: From the second entrance to the mouth of Pond Creek.

A large restoration project is ongoing on the southern end of Section 2. Be mindful of changes to access during the restoration.

Directions:

From Garden State Parkway South:

- Take the New Jersey 109 N exit (exit 0)
- Merge onto NJ-109 N
- Slight right toward U.S. 9 S
- Use any lane to continue onto U.S. 9 S
- Turn left onto Seashore Road
- Sharp right onto NJ 641/New England Rd and follow until it dead ends at the Higbee Beach parking area.

Parking:

- **Parking A:** Just before you reach the end of the road, turn to the right on Higbee Beach Rd and follow to the end to the parking lot. You'll be across from the ferry terminal. Walk the sandy trail to get to the beach.
- **Parking B:** At the end of NJ 641 is a second parking area. Walk the sandy trail to get to the beach.

2025 Summary

Total rescued crabs	87
Total rescue walks	6
Total crabs per walk	14.5
Overturned crabs	77
Impingements	10
Natural - Overwash	8
Natural - Veg/peat above high tide line	2

Contact Information:

The Wetlands Institute
Meghan Kolk
609-368-1211
mkolk@wetlandsinstitute.org

