

Pierces Point Beach



Access: Easy Walkability: Easy Effort: Easy

Can have overwash strandings after storms/high tides

Beach Information

Access: Entire beach is closed May 7 - June 7

Sponsoring Organization: Conserve Wildlife Foundation of NJ

Ownership: Cape May National Wildlife Refuge, State, Middle Township, Private

Other Activities: Horseshoe crab spawning surveys, horseshoe crab egg density surveys, shorebird research, shorebird stewards, American Oystercatcher research

Known Impingements

Section 1 – the bulkhead associated with the last **house** on the street, the smaller derelict horizontal bulkhead (**rubble**), and the larger triangular derelict bulkhead (**rubble**).

Section 2 – this section has multiple overwash areas where crabs can get stranded after storms and unusually high tides (**natural – overwash**).

2025 Summary

Total rescued crabs	2,086
Total rescue walks	24
Total crabs per walk	86.9
Overturned crabs	1,627
Impingements	459
Natural - Veg/peat above high tide line	393
House	33
Rubble	26
Natural - Overwash	3
Natural - Veg/peat below high tide line	2
Marine debris	1
Unknown	1

Beach Sections

Total Distance: 0.39 miles

Section 1 – 0.09 mi: From the entrance of the beach north up to and including the old triangular bulkhead.

Section 2 – 0.30 mi: From the end of the bulkhead to the end of the beach at Dias Creek.





Bulkhead associated with house.



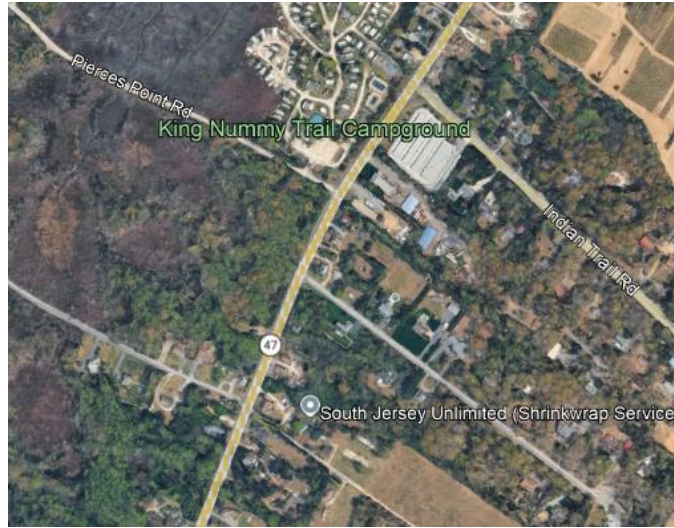
Horizontal derelict bulkhead (rubble).



Triangular derelict bulkhead (rubble).

Directions:

From Route 47: Turn onto Pierces Point Road. From the north it will be a right just after Indian Trail Road. From the south it will be a left just after Whippoorwill Lane. The turn is marked with a sign for King Nummy Trail Campground. Follow the road until it becomes Beach Ave at the curve to the right and dead ends at the end of the road.



Parking:

There is a dirt parking area on the right side of Beach Ave where it dead ends at the beach. Be cautious parking here at high tides when the parking area can flood.

Courtesy:

Be respectful of residents and properties when parking and conversing near homes, especially at night. Neighbors and wildlife (terrapins) appreciate when you follow the speed limits. Please obey all private property signs.

Note:

Watch for nesting American Oystercatchers and keep a safe distance.



Contact Information:

Conserve Wildlife Foundation of NJ
Larissa Smith
larissa.smith@conserwildlifenj.org