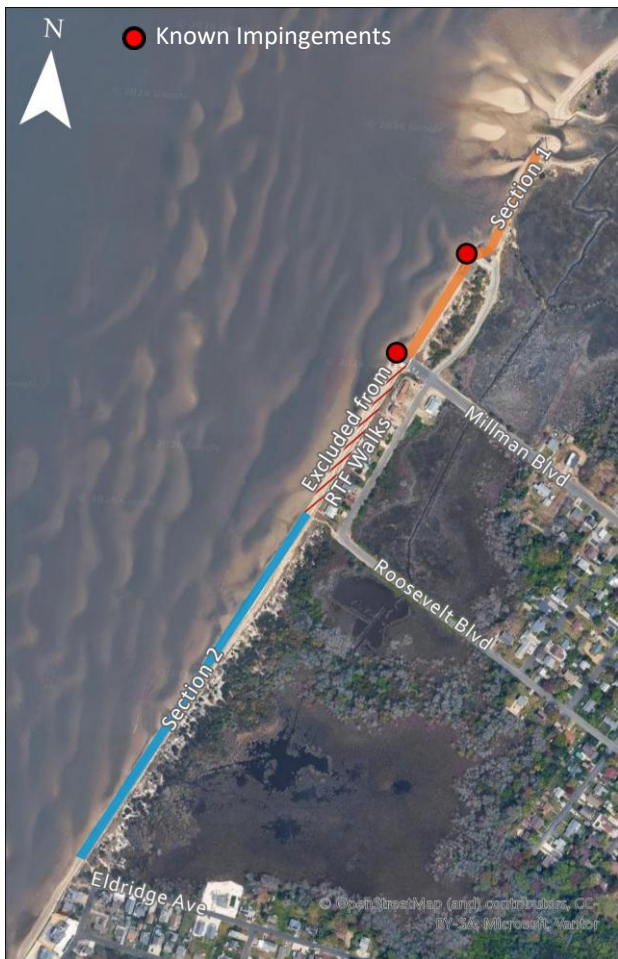


Sunray/Norbury Beach

Access: Moderate Walkability: Easy Effort: Moderate
Access at lower tide to get to impingement areas



Beach Information

Access: Entire beach is closed May 7 - June 7
Sponsoring Organization: New Jersey Audubon
Ownership: Cape May National Wildlife Refuge, The Nature Conservancy, Private
Other Activities: Horseshoe crab spawning surveys, shorebird research, shorebird viewing area, horseshoe crab egg density surveys

Beach Sections

Total Distance: 0.65 mile

Section 1 – 0.2 mi: Norbury Beach – starts at Norbury’s Landing and continues north to the creek.

Section 2 - UPDATED SECTION (June 2026): Sunray Beach – starts at **Roosevelt Blvd** and continue south to Eldredge Avenue. **RTF is no longer able to cover Millman Blvd to Roosevelt Blvd block.**

Known Impingements

Section 1 - Millman Blvd/Norbury’s Landing Bulkhead (**bin blocks/rip rap**) surrounding the platform

Riprap seawall surrounding house (**house**) northern-most house.

Safety:

The riprap can be slippery when wet so be cautious. If walking at night personal safety is a consideration so please bring a friend.

Avoid Millman to Roosevelt block.

2025 Summary

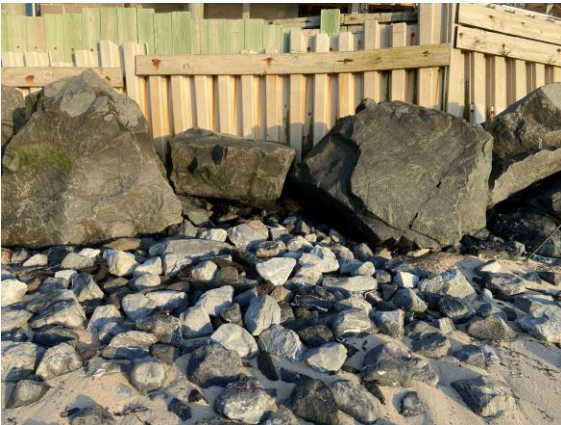
Total rescued crabs	2,332
Total rescue walks	13
Total crabs per walk	179.4
Overturned crabs	995
Impingements	1337
Bin blocks/rip rap	707
House	381
Rubble	249



Bin blocks/riprap surrounding Norbury's Landing.



Bin blocks/riprap surrounding house.



Closeup of bin blocks/riprap surrounding house.

Directions/Parking:

From Route 47: Make a right (from the north) or left (from the south) onto Bayshore Road (Route 603)

For Millman Blvd (Sect 1 ONLY): Take Bayshore to the next light and continue straight onto Millman Boulevard which ends at the Bay. Park in the designated parking area.

For Roosevelt Blvd (Sect 2, north end): Take Bayshore to the next light and make a left to continue on Bayshore. Turn right onto Roosevelt Blvd. Park along the roadside and take the path to the beach.

For Eldredge Ave (Sect 2, south end): Take Bayshore Road to the next light and make a left to continue on Bayshore. Turn right onto Eldredge Avenue. The best place to park is where Eldredge turns slightly left and becomes Delaware Avenue.

Courtesy:

Please be courteous to residents and property when parking and conversing near homes, especially at night. Be aware of the posted private property on the beach just to the south of Norbury's Landing.

Contact Information:

New Jersey Audubon
Adehl Schwaderer
Phone: 609-400-3832
Email: adehl.schwaderer@njudubon.org

